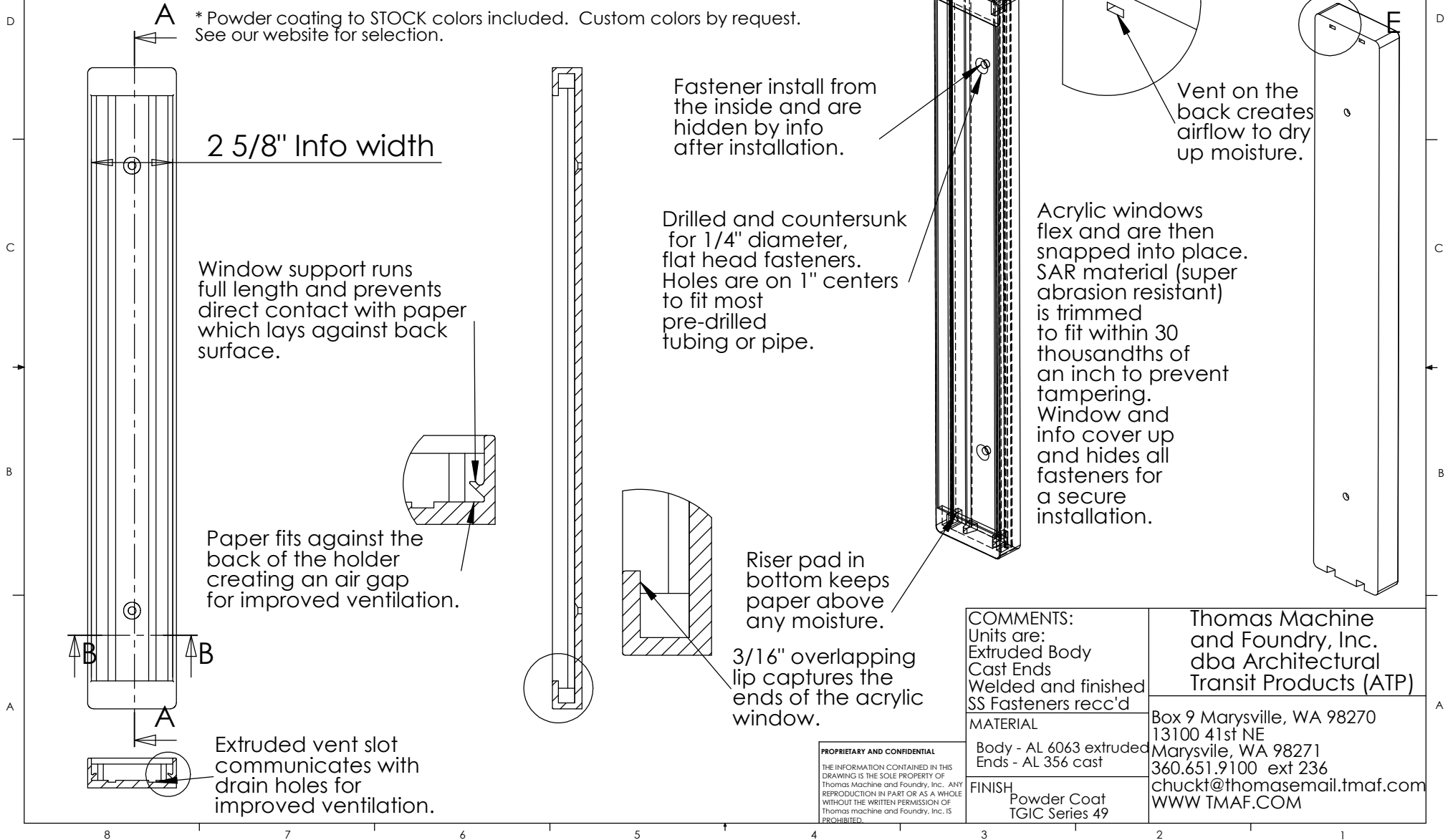


Part #	Fits Paper Sizes	Custom Length Avbl	Tube/Pole Mount Avbl	Includes Abrasion Resistant Window
101	2 3/4 x 11, 2 3/4 x 14, 2 3/4 x 17, 2 3/4 x 21	YES	NO	YES
201	5 1/2 x 11, 5 1/2 x 14, 5 1/2 x 17, 5 1/2 x 21	YES	YES	YES
301	8 1/2 x 11, 8 1/2 x 14, 8 1/2 x 17, 8 1/2 x 21	YES	YES	YES

* Powder coating to STOCK colors included. Custom colors by request. See our website for selection.



COMMENTS:
Units are:
Extruded Body
Cast Ends
Welded and finished
SS Fasteners recc'd

MATERIAL
Body - AL 6063 extruded
Ends - AL 356 cast

FINISH
Powder Coat
TGIC Series 49

Thomas Machine and Foundry, Inc.
dba Architectural Transit Products (ATP)

Box 9 Marysville, WA 98270
13100 41st NE
Marysville, WA 98271
360.651.9100 ext 236
chuckt@thomasmachine.com
WWW.TMAF.COM

PROPRIETARY AND CONFIDENTIAL
THE INFORMATION CONTAINED IN THIS DRAWING IS THE SOLE PROPERTY OF Thomas Machine and Foundry, Inc. ANY REPRODUCTION IN PART OR AS A WHOLE WITHOUT THE WRITTEN PERMISSION OF Thomas Machine and Foundry, Inc. IS PROHIBITED.

C D